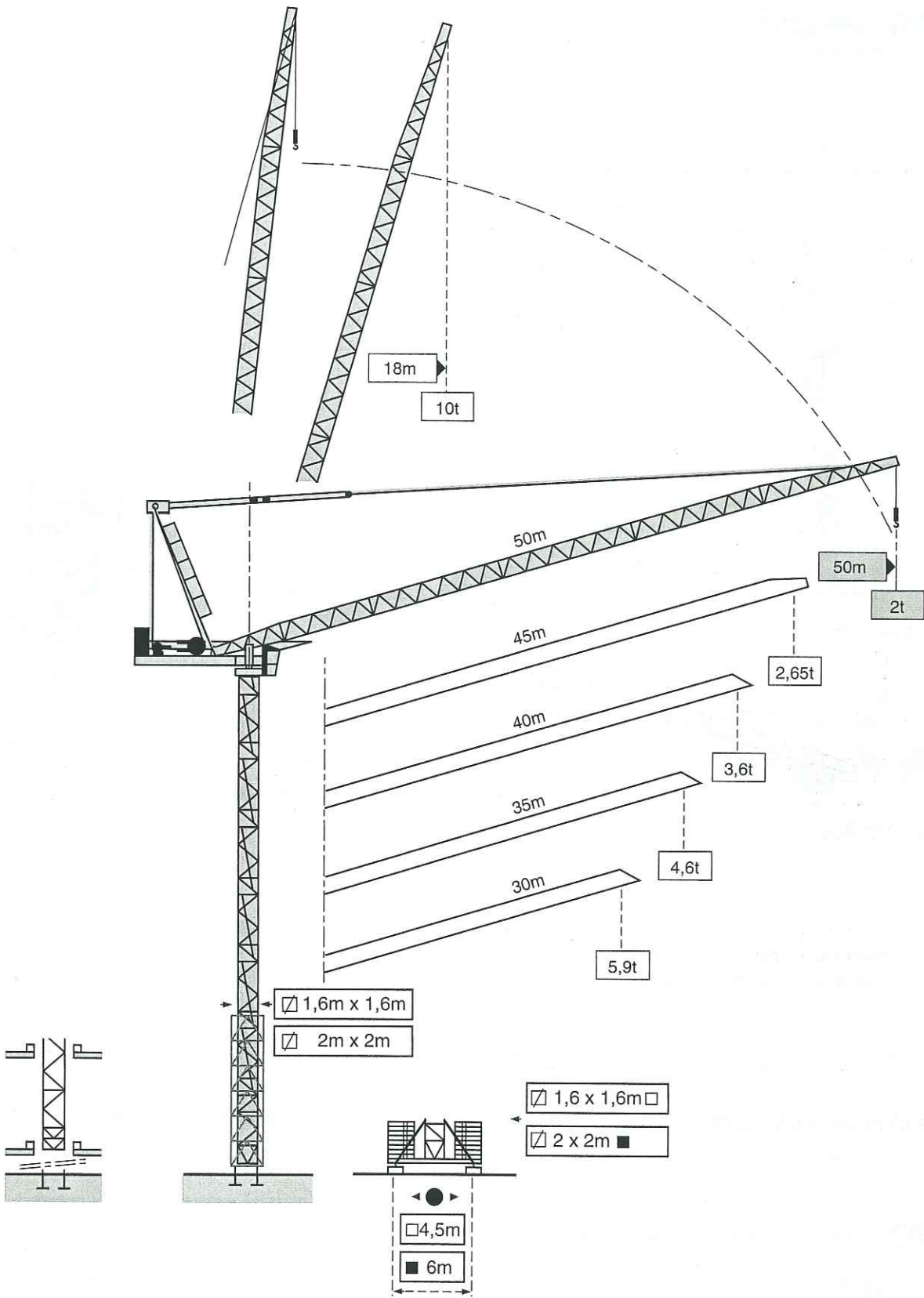


MR 150

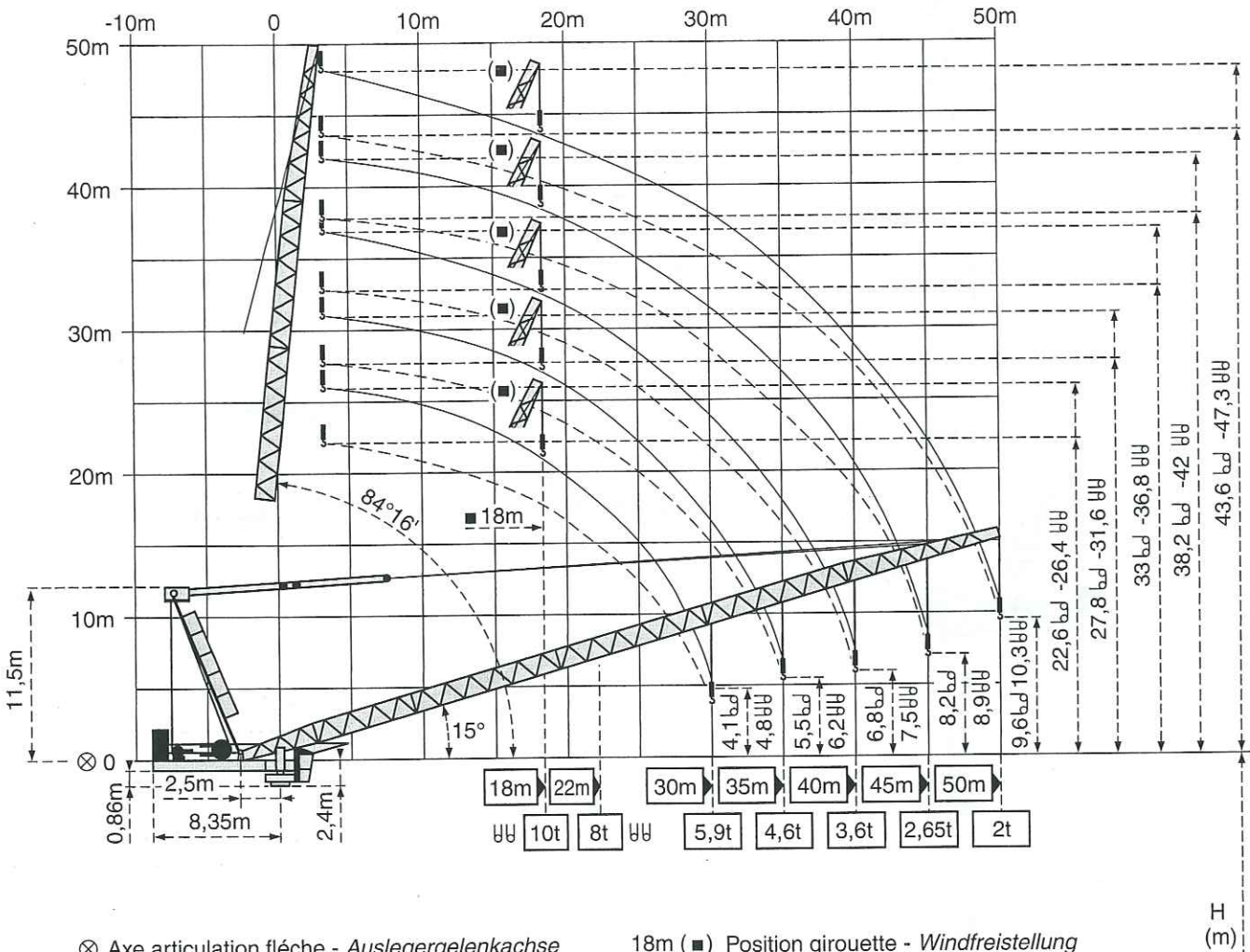


MR 150

LIB 1

POTAIN ®






⊗ Axe articulation flèche - Auslegergelenkachse
 Jib hinge shaft - Eje articulación de flecha
 Asse cerniera braccio - 吊臂铰接销轴

18m (■) Position girouette - Windfreistellung
 Weather vane position - Posición eleta
 Libera rotazione - 风向标状态

H (m)

Courbes de charges - Lastkurven - Load diagrams - Curvas de cargas - Curve di carico - 负荷曲线

 Flèche - Ausleger - Jib - Flecha - Braccio - 起重臂

50m	3,5	18	20	22	25	27	30	32	35	37	40	42	45	47	50	m
UU	10	9	8	6,8	6,1	5,2	4,75	4,1	3,7	3,2	2,9	2,5	2,3	2	t	

45m	3,5	18	20	22	25	27	30	32	35	37	40	42	45	m
UU	10	9	8	7,1	6,4	5,4	4,95	4,3	3,95	3,4	3,1	2,65	t	

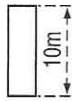
40m	3,5	18	20	22	25	27	30	32	35	37	40	m
UU	10	9	8	7,3	6,6	5,6	5,15	4,45	4,1	3,6	t	

35m	3,5	18	20	22	25	27	30	32	35	m
UU	10	9	8	7,5	6,8	5,8	5,3	4,6	t	

30m	3,5	18	20	22	25	27	30	m
UU	10	9	8	7,7	7	5,9	t	

TELESCOPABLE - TELESKOPIERBAR - TELESCOPIC - TELESCOPICO - TELESCOPICO - 可顶升

K 407 B



K 407 E

Mats - Maste - Masts - Mástil - Torre - 塔身 $\square 1,6m$

K 407 A

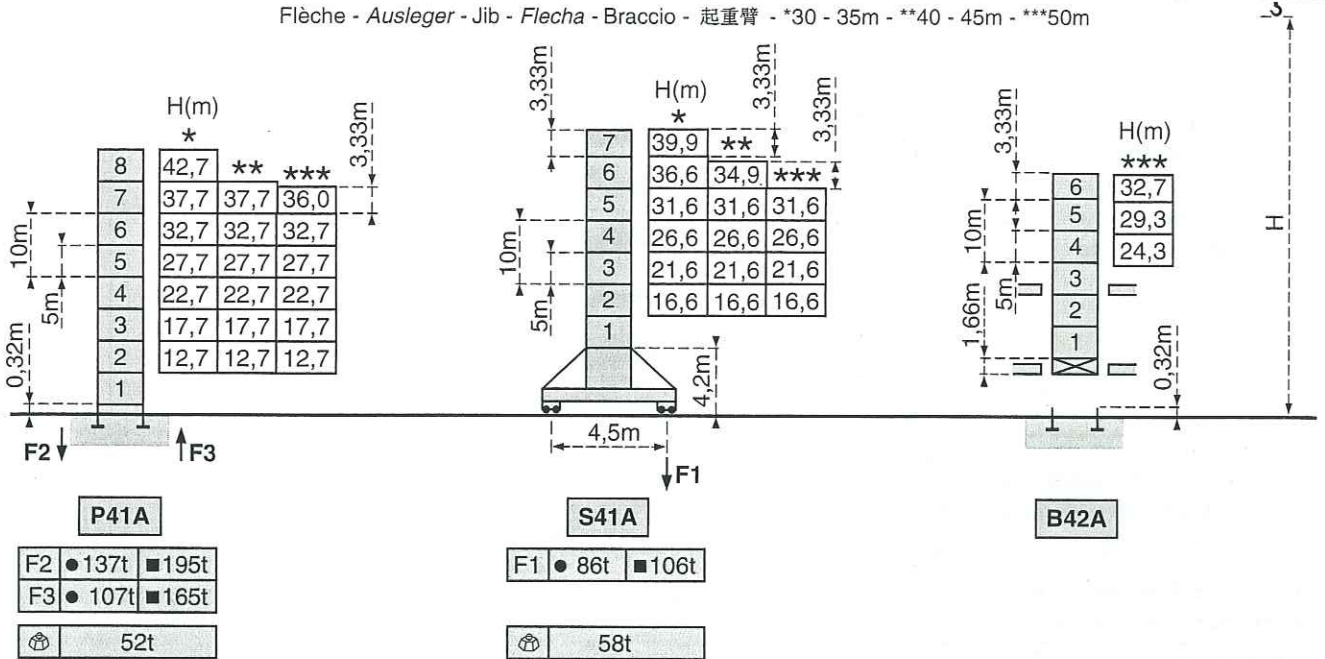


K 409 A

K 407 C

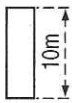


Flèche - Ausleger - Jib - Flecha - Braccio - 起重臂 - *30 - 35m - **40 - 45m - ***50m



F = Réactions - Eckdrücke - Reactions - Reacciones - Reazioni - 反力

K 607 E



K 609 B

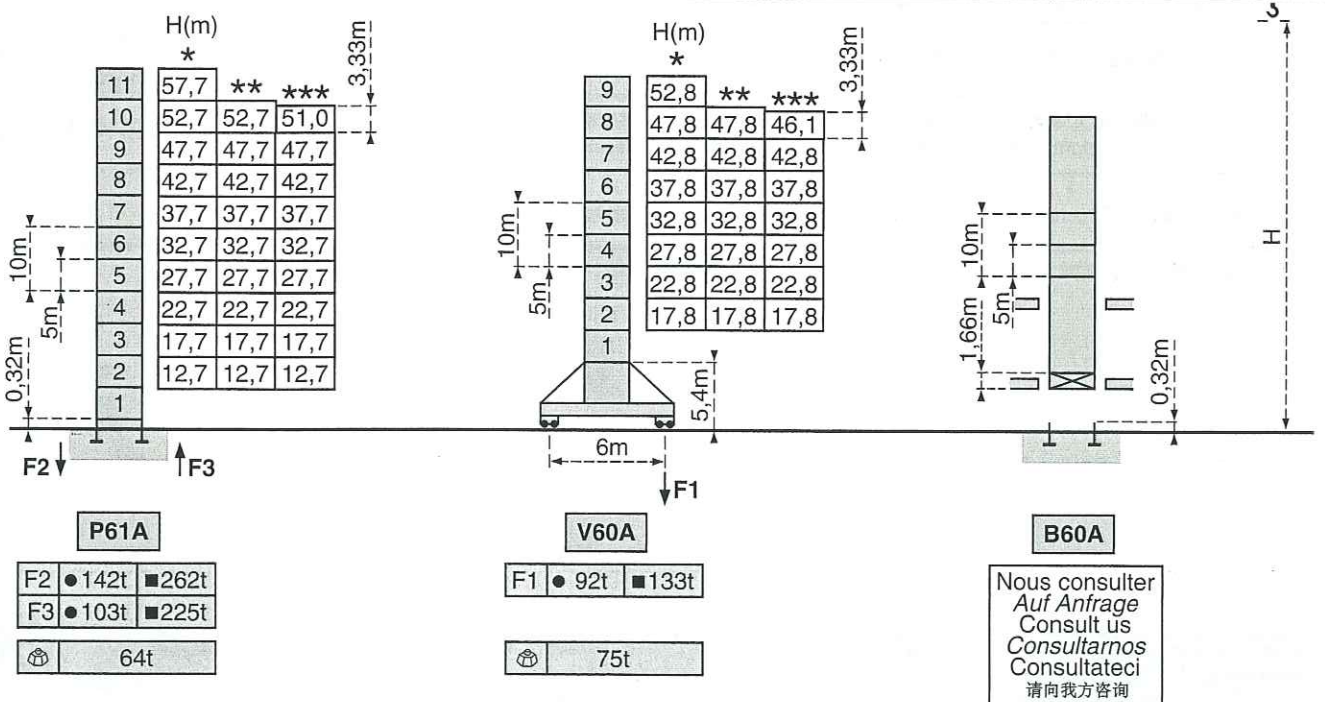
Mats - Maste - Masts - Mástil - Torre - 塔身 $\square 2m$

K 607 A



K 609 A

K 609 C



F = Réactions - Eckdrücke - Reactions - Reacciones - Reazioni - 反力

● En service
■ Hors service
⊗ A vide sans lest avec flèche et hauteur maximum.

● In Betrieb
■ Ausser Betrieb
⊗ Ohne Last und Ballast mit Maximalausleger und Maximalhöhe.














● In service
■ Out of service
⊗ Without load and ballast with longest jib and maximum height.

● En servicio
■ Fuera de servicio
⊗ Sin carga, sin lastre con flecha y altura máxima.

● In servizio
■ Fuori servizio
⊗ A vuoto senza zavorra e con braccio massimo e altezza massima.

● 工作状态
■ 非工作状态
⊗ 空载, 无配重, 起重臂和高度均为最大值

Mécanismes - Antriebe - Mechanisms - Mecanismos - Meccanismi - 机构

				m/min	t		ch -PS hp	kW			
Levage Heben Hoisting Elevación Sollevamento 起升	55 RCS 20 ▲ ● ▼	bd		0 → 52	4	552 m >552 m*	55	40			
				0 → 104	2						
		bb		0 → 26	8						
				0 → 52	4						
	55 RCS 25 ▲ ● ▼	bd		0 → 42	5				430 m >430 m*	55	40
				0 → 84	2,5						
		bb		0 → 21	10						
				0 → 42	5						
Relevage - Ausleger-Einziehen - Luffing Elevación de flecha - Brandeggio - 升降		75 VTV 50	1mn 36s				75	55			
Orientation - Schwenken - Slewing Orientación - Rotazione - 回转		RCV 145	0 → 0,8 tr/min U/min-rpm				2x6	2x4,4			
Translation Kranfahren Travelling Traslación Traslazione 行走	S 41 A   V 60 A	RT 443 A1 2V	15 - 30				4 x 5	4x 3,7			
		RT 544 A1 2V	13,5 - 27				4 x 7	4 x 5,2			
Réseau - Netzstrom - Mains supply - Red - Rete elettrica - 电网						CEI 38 IEC 38	400V (+6%, -10%) 50Hz				
Puissance électrique nécessaire - Anschlusswert - Necessary electric power Potencia eléctrica necesaria - Potenza elettrica necessaria - 所需功率							150 KVA				
Groupe électrogène - Stromaggregat - Generator set - Grupo electrogeno - Gruppo elettrogeno - 发电机组							*				

*Nous consulter - Auf Anfrage - Consult us - Consultarnos - Consultateci - 请向我方咨询

Conforme aux directives CEE 84/534 et 87/405 sur le niveau acoustique - Gemäss EWG-Richtlinien 84/534 und 87/405 für den Schall- Leistungspegel
 In compliance with the EEC 84/534 and 87/405 Instructions on noise level - Conforme con las directivas CEE 84/534 y 87/405 sobre el nivel acustico
 Conforme alle direttive CEE 84/534 e 87/405 sul livello acustico - 符合 CEE 84/534 - CEE 87/405 声响应规定



FEM 1.001-A3

Copyright.Reproduction interdite © POTAIN 1997



.Rue de Charbonnières, B.P. 173-F 69132 ECULLY Cedex
 I. (33)04.72.20.20 - Fax (33)04.72.20.00
 p://www.potain.fr - E-mail : mkt@potain.fr

POTAIN GmbH Deutschland Tel : 06.105.704.0
 VMAPOTAIN Italia Tel : 039.65.631
 上海宝塔 POTAIN China Tel : 520 877 1451

MR 150

Réf. 1997.06 LIB 1

修改权 riserv Modific s/resc s/resc Subjec rbeha rberur iservé s/resc a France Réalisat... cODI